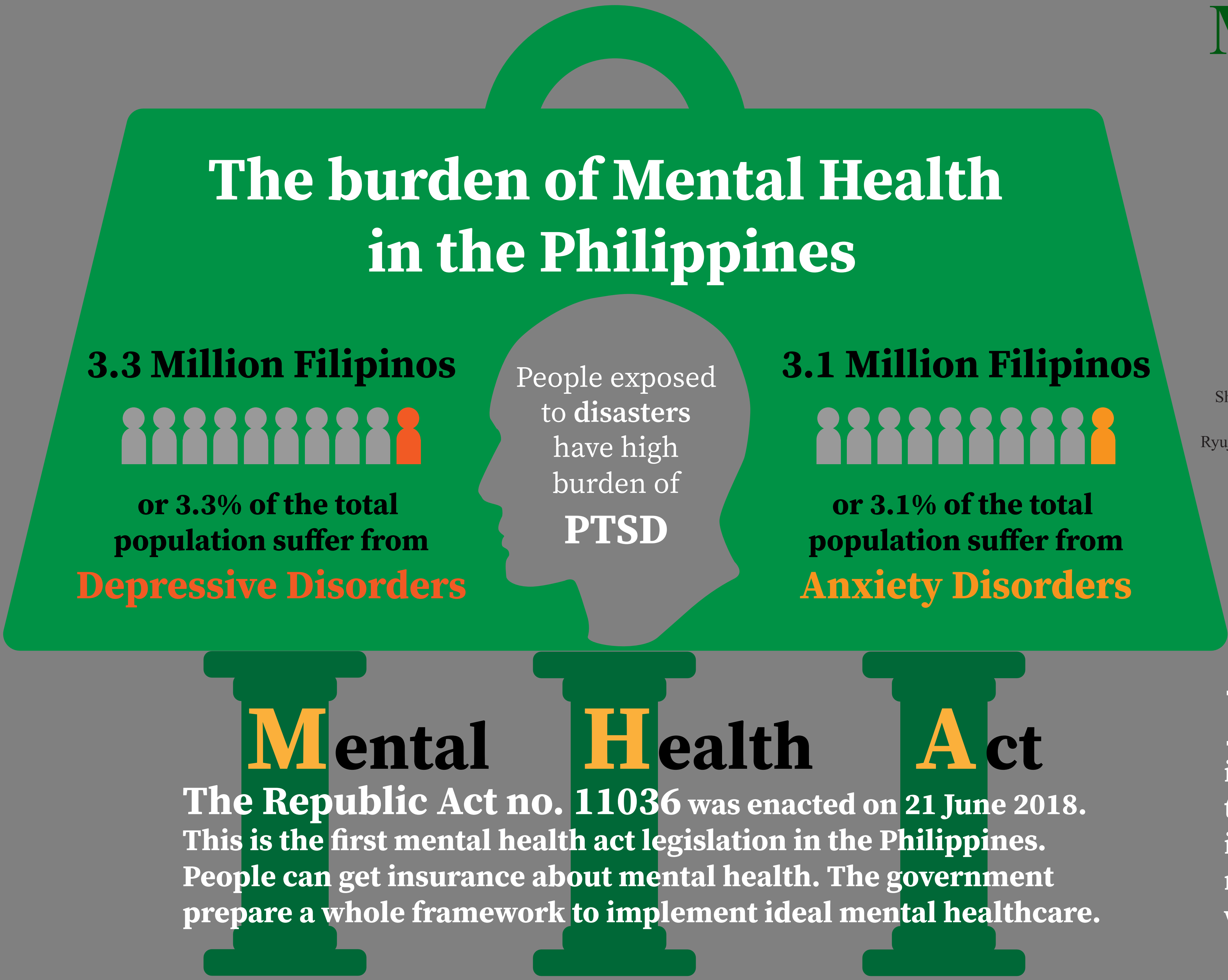


Mental Health in the Philippines

a review of the current situation in Manila and Leyte

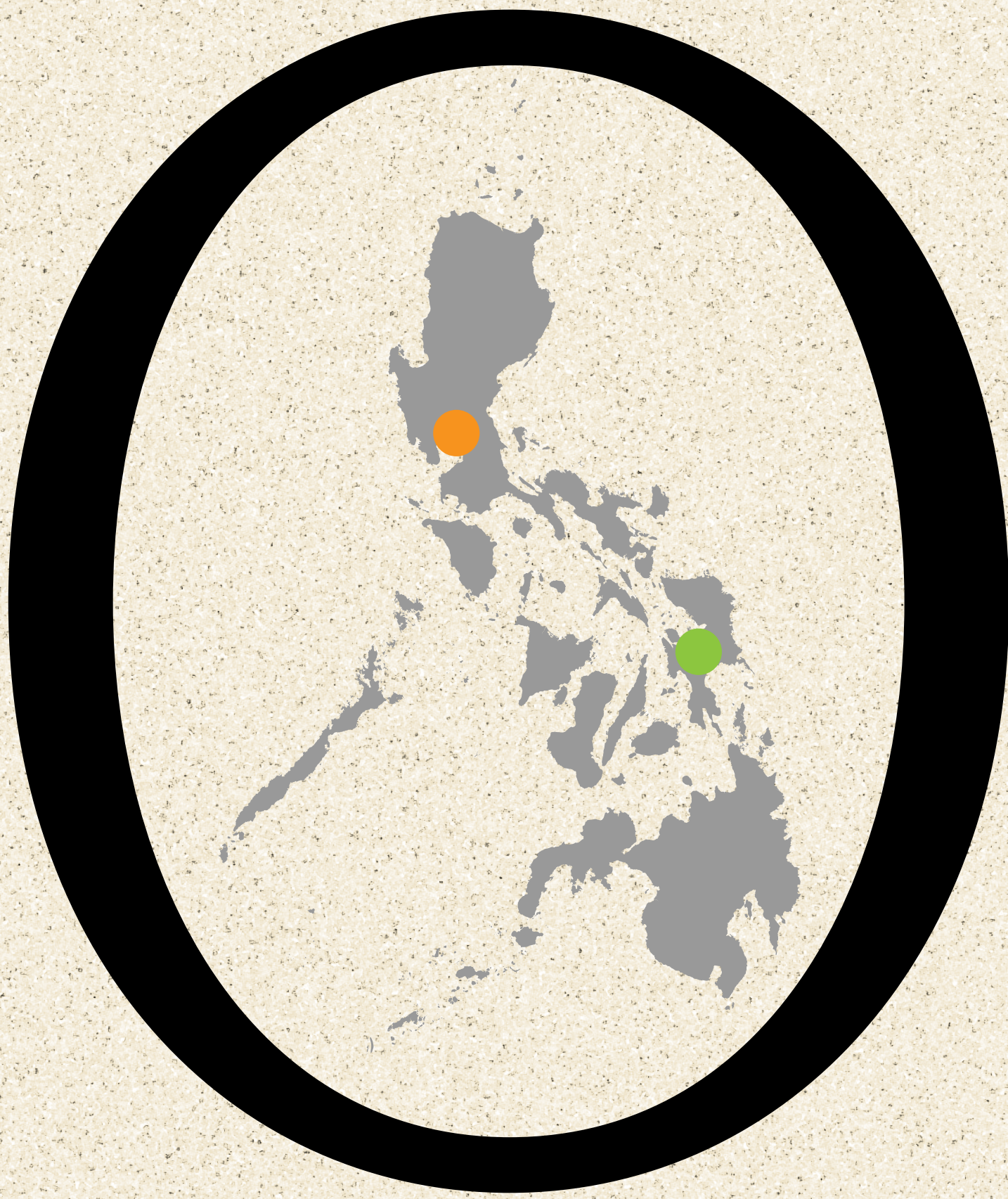
Shingo TAMAKI¹, Siti NUR-DIYANA MOHD ALIPAH¹, Ken YOSHIMURA¹,
Ryuji YOSHINO¹, Scott LUCAS¹, Taro KIKUCHI¹, Atsuko IMOTO¹, Miho SATO¹
¹ Nagasaki University School of Tropical Medicine and Global Health



BUT there is limited information on current situation about mental health issues in the Philippines with regard to patients and health workers.

Study Settings

- Manila:** In Touch Community Services, National Center for Mental Health
- Leyte:** Schistosomiasis Control and Research Hospital, Eastern Visayas Regional Medical Centre



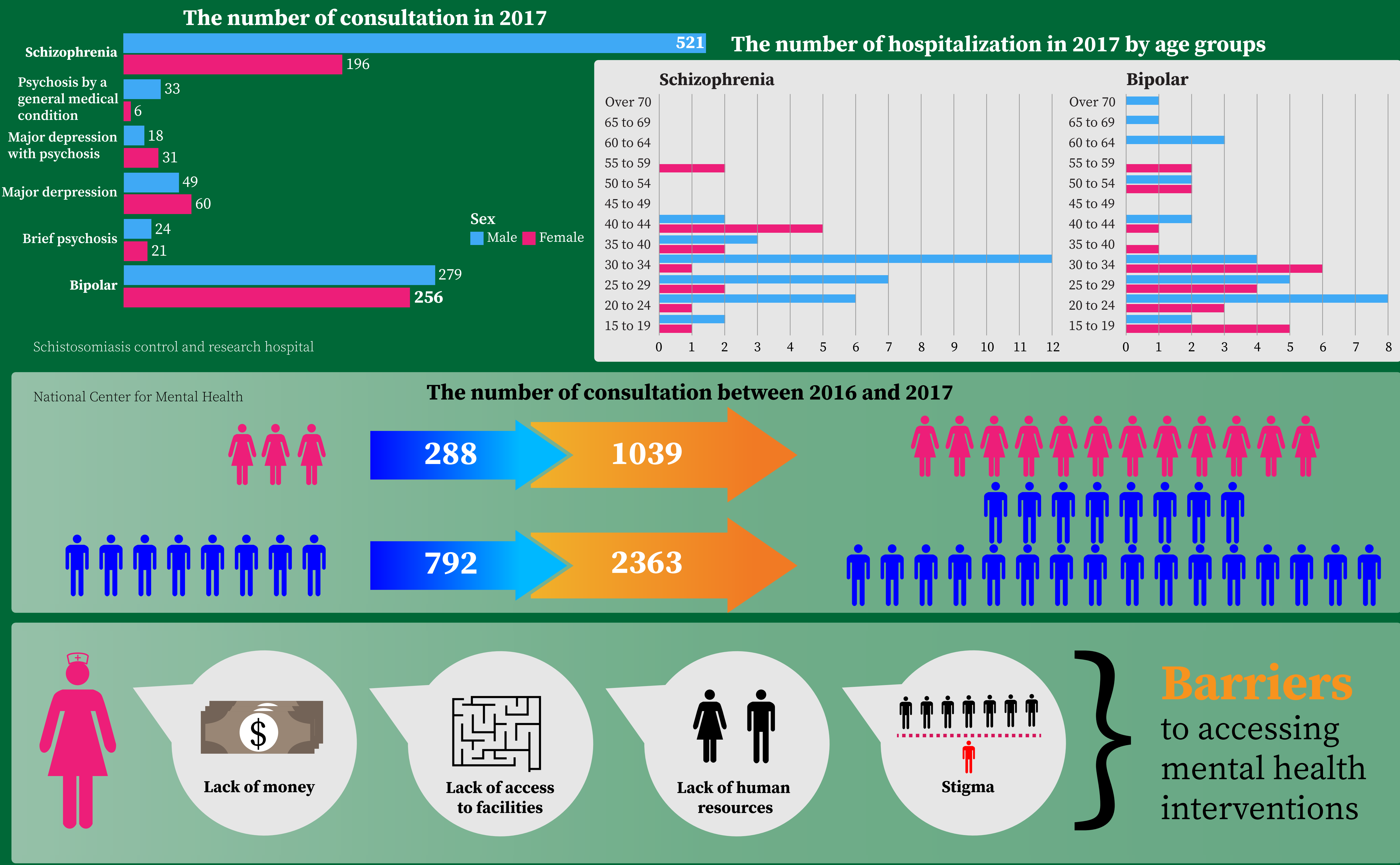
Objectives

1. To describe the general characteristics of the patient population in the selected health facilities in Manila and Leyte
2. To detail the main barriers to MH interventions from the perspectives of healthcare professionals

Data Collection

- Qualitative** – semi-structured interviews with healthcare workers (HCWs) working in the MH field, including psychiatrists and the MH coordinator of DOH Region VIII.
- Quantitative** – secondary data on aspects such as the number of patients with mental illnesses in recent years from facility-based cases.

Results



Conclusion

The Philippines are likely to have continuous challenges awaiting them in terms of MH. The burden of MH illnesses and the number of patients seeking consultations are increasing. Barriers still limit access to MH services. However, there have been a reduction in stigma and an increased awareness in MH. Furthermore, the government initiatives from the law may lead to future improvements in the MH situation in the Philippines.